

Panasonic
ideas for life

Panasonic
ideas for life

Experience the allure of
Sensational Warm Massage from
the comfort of your own home



NEW **REAL PRO** EP-MA70

Indulge in the sensational warm massage
from the comfort of your own home.

Experience the allure of



The all-new Real Pro now features
revolutionary thermal massage balls.

This unique innovation combines professional
massage techniques with a warm, soothing touch to
give you the ultimate relaxation for your neck,
shoulders and back.

And with its sophisticated design, the new Real Pro
is sure to add a sense of class to any home.



Black

NEW REAL PRO EP-MA70

The warm massage
for your neck,
shoulders and back.

- The thermal massage balls apply the calming strokes of a masseur's warm, skillful hands, offering complete relaxation for tired, aching muscles.
- The 3D massage mechanism and air massage techniques work in tandem to release tense muscles for a total body massage.
- The Real Pro doubles up as a comfortable armchair when not in use.

Professional massage techniques combined with a warm touch.
This sensational warm massage* that soothes aching muscles for the ultimate relaxation.

Massage your neck, shoulders and back.



**Thermal
Massage
Balls**

New Technology

Panasonic's latest innovation, featuring built-in thermal massage balls, creates warmth to ease swelling and sooth tense muscles. The technology applies the calming strokes of a masseur's warm, skillful hands, offering complete relaxation for tired, aching muscles.



Massage balls move down the lumbar curve to massage the waist with a rolling motion, while effectively stretching the waist.

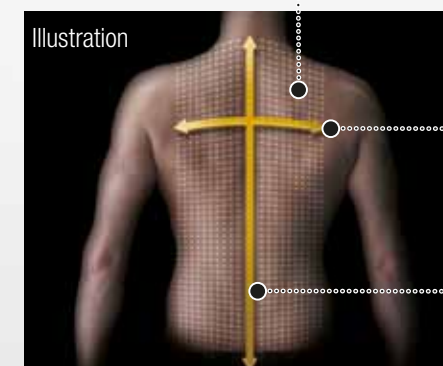
Massage balls move up and down the cervical spine. A gentle neck and shoulder massage eases stiff necks and aching shoulders.

Massage area covers a wide section of the back, as a soothing warm touch relaxes it.

"Repeat Massage" option concentrates kneading on a precise area.

Maximum protrusion of **12.5cm**

Massage balls extend to reach 12.5cm. This ensures effective relief of shoulder stiffness.



Wider neck and shoulder coverage

Left/right movement
Maximum span: **21cm**
Minimum span: **5cm**

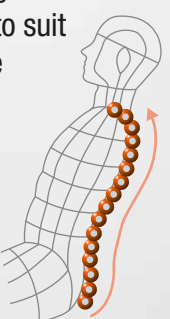
From the cervical spine to the lumbar curve Up/down

Up/down coverage: **78cm**

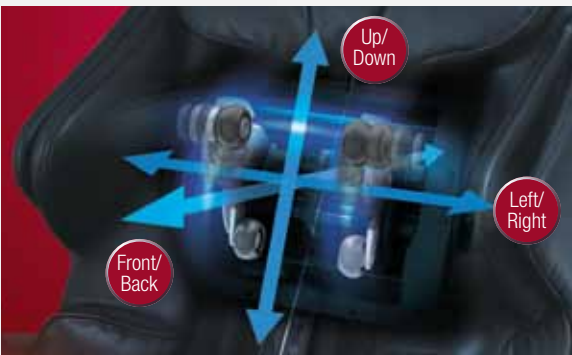
Enjoy a relaxing massage with Real Pro's high-tech auto body scanning system. Real Pro's technology is able to detect the prominent points of your body through its massage heads and adjust them accordingly.

Its sensor technology delivers a gentle massage specifically contoured to suit each back and shoulder's unique structure, while giving special attention to your spine.

Effective height scan ranges from 140cm-185cm



Enjoy the benefits of a 3D massage.
Just like a professional masseur's skillful hands, it applies
of a variety of massage techniques to offer maximum relief
to aching muscles.



Panasonic's new 3D massage techniques utilize
professional massage styles.

Panasonic's latest innovation enables up-down,
left-right and front-back 3D massage
movements and offers professional techniques
such as the straight-line pressure Shiatsu
massage and the Kneading process involving
thumb circular pressure.



High performance
brushless motors

With 108 massage techniques available, different styles can be applied to a various areas.

This includes one of the 5 basic massage styles known as the "Kneading process", and spot- specific movements to relax particularly
tense areas of the body.

■ Examples of spot-specific
massage techniques

Body Areas	Sagittal	Examples of spot-specific massage techniques				
		Ultra Kneading	Shiatsu	Gentle Kneading	Rolling	Tapping
Neck		Neck Kneading	Neck Shiatsu Kneading	Neck Kneading	Neck Rolling	Neck Tapping
		Shoulder Kneading	Shoulder Shiatsu Kneading	Shoulder Kneading	Shoulder Rolling	Shoulder Tapping
		Back Kneading	Back Shiatsu Kneading	Back Kneading	Back Rolling	Back Tapping
		Waist Kneading	Waist Shiatsu Kneading	Waist Kneading	Waist Rolling	Waist Tapping
		Lower Back Kneading	Lower Back Shiatsu Kneading	Lower Back Kneading	Lower Back Rolling	Lower Back Tapping

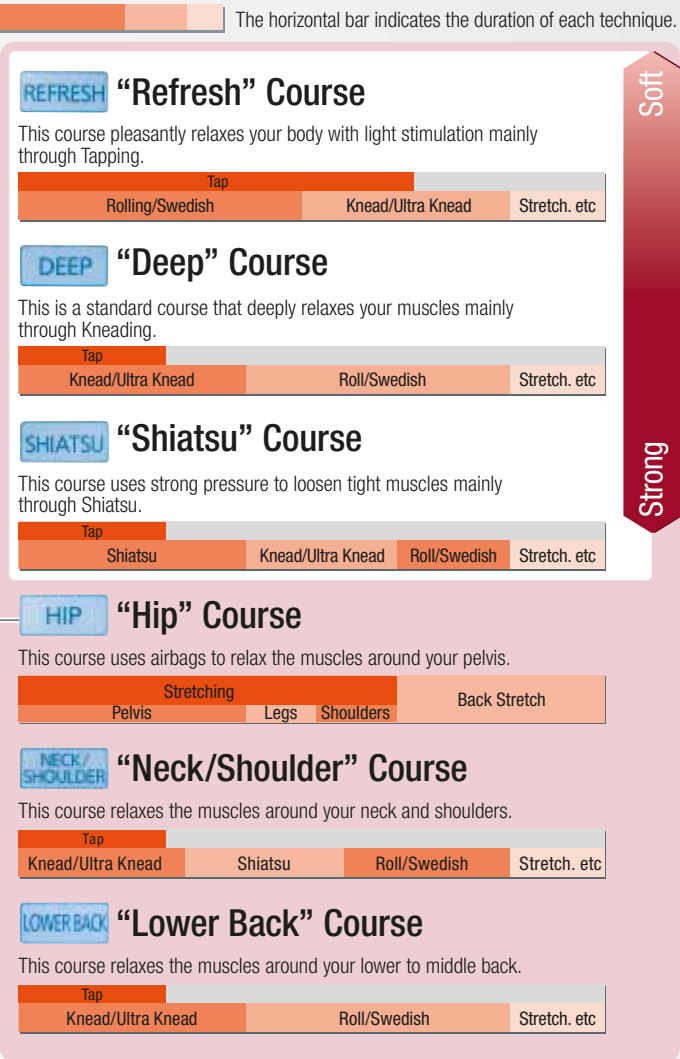
Tapping technique Can be used on its own or in combination with the basic techniques.

(Arrows indicate directional movements in the illustration.)

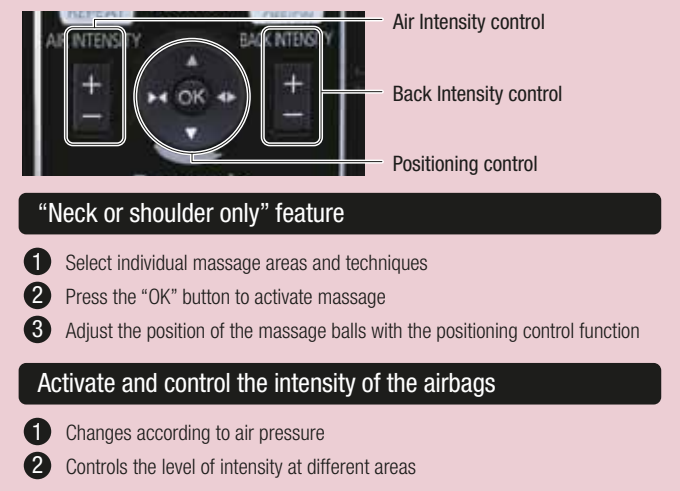
Our user-friendly controller lets you customize your
massage with the click of a button.



There are 6 automatic full-body massage
courses to choose from, each targeting
different needs and areas of the body.



Customize your own programs



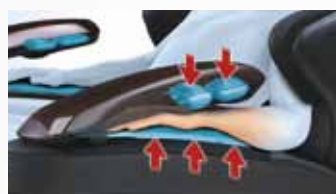
Rejuvenate yourself with full body air pressure massage from your shoulders to the soles of your feet.

Shoulder massage



Suitable amount of pressure is applied to relax the shoulders.

Hand and wrist massage



Top and bottom kneading is applied at crucial tension points to relax the hand and arm.

The armrests adjust according to the degree of the reclined chair.

With the armrests angled with the backrest, you can enjoy arm massage even while lying down.



Antibacterial (Hand care facilities)

In accordance with the Japanese Standards Association, JIS L 1902-2002

Note:

Remove accessories such as watches, rings and nail extensions when massaging arms and hands to avoid possible discomfort.

Hip and thigh massage



Airbags at the waist and thighs relax the muscles.

Buttock, pelvis and thigh stretching



Calculated based on an unoccupied chair.

3 airbags at the buttocks and thighs for better relaxation.

Calf kneading



Kneading is applied on both sides of the calf.

Foot Massage



Foot Massage with 3D air cushions for a realistic massage experience.



Shiatsu foot pad

Panasonic's new **3D Massage Mechanism** and **Air Massage** technology features 3 all-new massage and stretching techniques.



3D Massage Techniques
Panasonic's latest innovation enables up-down, left-right and front-back 3D movements for a professional massage.

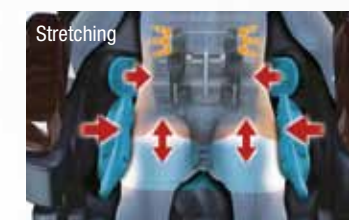


Unite



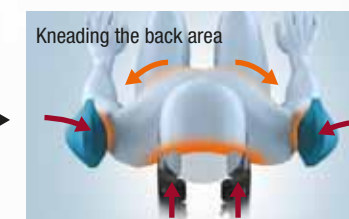
Airbags surround the whole body
Full body air pressure massage from your shoulders to the soles.

1 Stretching massage around the pelvis



Airbags on both sides hold the pelvic area as the massage balls knead the back

2 Stretching massage around the shoulder blades



Airbags hold both sides of the shoulder in place as massage balls knead the back, spanning from the shoulders to the chest.

3 Stretching massage for the leg



Airbags inflate to hold the sides of the thigh, calf and soles of the feet. The leg-rest rises to stretch the leg muscles while the back is kneaded using 3D massage techniques.

Experience greater comfort by reclining the Real Pro to your desired level.

The dual-purpose Real Pro also functions as a comfortable armchair.
A simple, elegant design that will suit any home.

As a massage chair

Gives a full body massage any time.

As an armchair

Arm and leg rests can be folded neatly for more leg room.

2 WAY

Dual function

Place the soft padding on top of the head pillow

Pull the leg-rest lever while turning the leg-rest around in an upward direction.

Push the leg rest into position and release the leg-rest lever.

With the soft padded pillow, you will be extra comfortable on this luxurious chair.

Eye Level

Soft padded pillow

Raise the head pillow slightly for added comfort while watching TV

Gently massages along the spine while maintaining body balance.

Feel relaxed even after spending long hours in front of the TV.

With the backrest reclining to 170°, you can experience complete relaxation of your body and mind.

REAL PRO

Treat yourself to the Real Pro warm massage experience
Just as good as a professional masseur's warm, skillful hands.

Comes with remote control

Reclining up to 170°

Synthetic leather for easy maintenance

Auxiliary wheels make shifting easy

Comes with a safety lock

Leg-rest can be adjusted to different heights up to a maximum of 18cm

The Real Pro doubles up as a cozy armchair when not in use.



Specifications

	Product name	Massage chair EP-MA70
	Power supply	AC 230V, 50Hz
	Power consumption	120W (Approx. 0.3W when controller is set to OFF.) (Electric heating equipment 23W)
	Electric heater power consumption	23W
Upper body massage	Massage area (up-down)	Approx. 78cm (massage heads move a total of approx. 62cm)
	Massage area (left-right)	Distance between massage heads during operation (adjustable massage width) Neck, shoulder, back, lower back: Approx. 5 - 21cm
	Massage area (forward-back)	Projection of massage head (adjustable intensity): Approx. 10cm
	Massage speed	Tap: Approx. 190 - 520 cycles/minute (single side) Full roll: Approx. 36 - 91 seconds (return) Other: Approx. 4 - 50 cycles/minute
Air massage	Air pressure (calf)	3: Approx. 32 kPa, 2: Approx. 28 kPa, 1: Approx 16 kPa (*May vary slightly with the part of the body)
Dimensions	Reclining angle	Backrest: Approx. 120 - 170° Leg rest (leg/sole massage section): Approx. 5 - 85° Leg rest (flat section): Approx. 15 - 95°
	Timer	Automatically turns off after approx. 16 minutes
	When not reclined	Approx. 115 x 83 x 122cm (H x W x D)
	When reclined	Approx. 66 x 83 x 202cm (H x W x D)
	Weight	Approx. 87kg
	Surface material	Synthetic leather
	No. per package	1
	Made in	xxxxxx CHINA